

# WELCOME TO THE CITY OF WALNUT CREEK OPEN SPACE

In 1974, a \$6.75 million bond was approved by the citizens of this community to purchase and preserve the undeveloped ridgelines that surround the city and contribute so much to its quality and character. With over 2,700 acres of oak woodlands, grassland savannah and chaparral, this is one of the largest city owned open spaces in the San Francisco Bay Area.

Located within **Shell Ridge** is the historic **Borges Ranch**, placed on the National Registry of Historic Places in 1981. Established in 1899, this still working cattle ranch features weathered barns and ranch buildings, corrals and the restored Borges family home. A picnic area and children's fishing pond are situated just below the ranch.

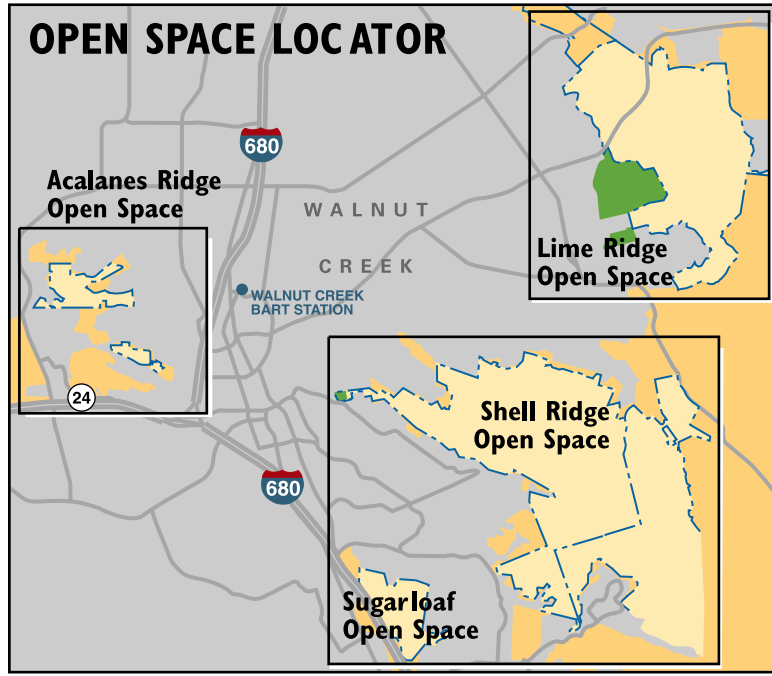
A popular Shell Ridge trailhead begins at **Howe Homestead**. This was the former home for James Howe, a foreign news correspondent and entrepreneur, and his wife Mia. The City's community garden is found here as well.

**Lime Ridge** encompasses both City of Walnut Creek and City of Concord properties. It contains some of the last remaining chaparral vegetation in the area. This preserve area is rich in diversity of both plants and animals and is protected more than other areas. Please heed the signage throughout.

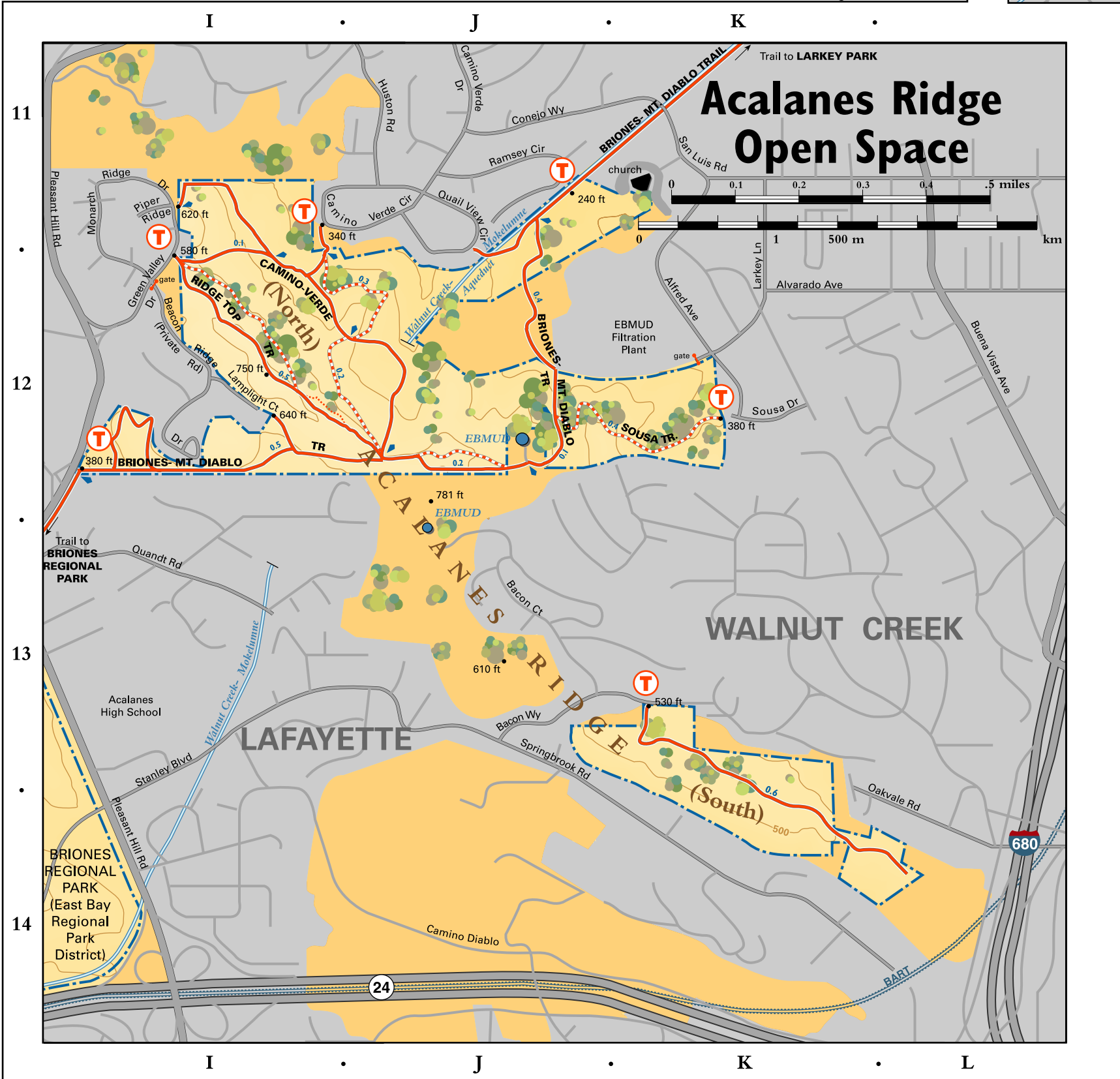
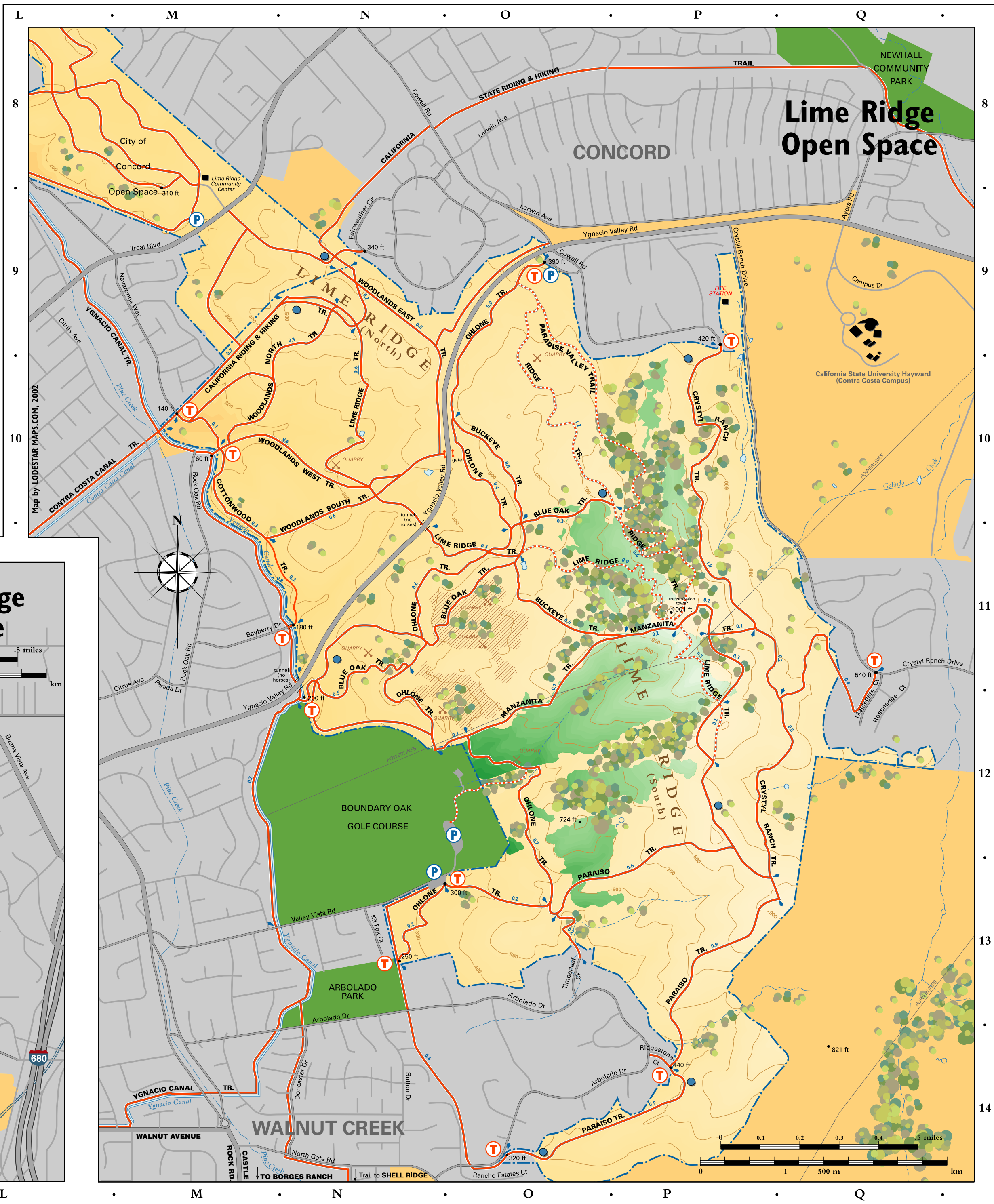
**Sugarloaf** presents an opportunity to stroll through one of the last walnut orchards in the City. **Acalanes Ridge** straddles the ridge between Lafayette and Walnut Creek providing vistas east toward Mt. Diablo and the other Open Space units.

Cattle graze throughout most of the Open Space areas, not only to preserve the area's cultural history but to reduce invasive weeds as well. They are generally very docile, and, although curious, will normally move away from people. Don't bother them and they won't bother you!

Hiking, horseback riding and mountain biking are all available in our Open Spaces. Please check the entry points and trail markers for regulations applying to specific areas or activities. Please remember, the efforts of *yesterday* created the opportunities of *today*. Do your part to preserve them for *tomorrow*.



Borges Ranch





**WALNUT CREEK OPEN SPACE**

**WELCOME TO THE WALNUT CREEK OPEN SPACE**

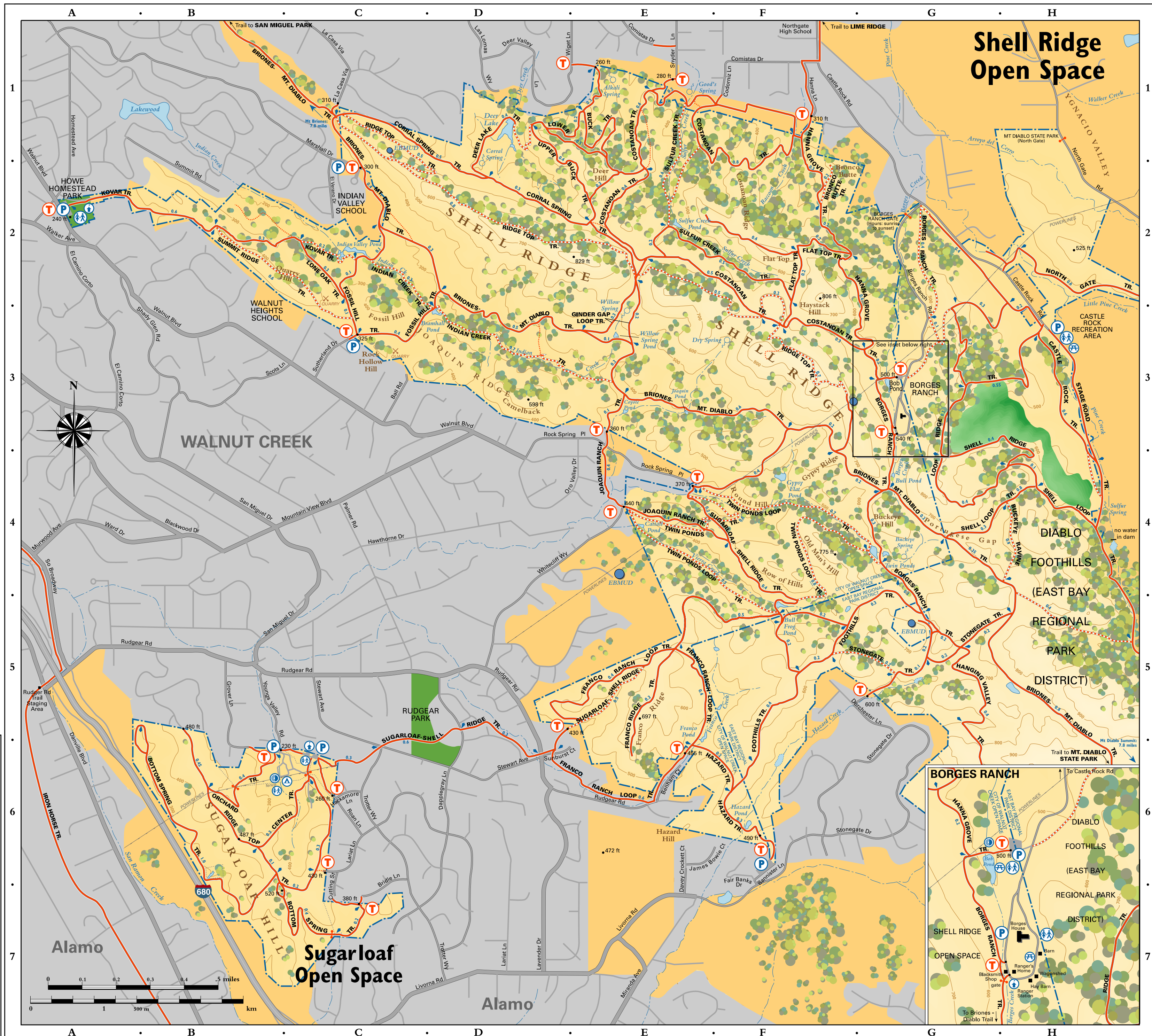
- During your visit, please observe the following regulations:
- The Open Space is open to the public during daylight hours only. WCMC Art 4 sec. 11-1-1401
  - All plant, animal, and geological features are protected. Do not capture, collect or harm. WCMC Art 5 sec. 11-1-506
  - Bicycles are permitted only on paved trails and unpaved roads over eight feet in width, unless otherwise posted. Bicycles shall be operated in a safe manner with a speed not in excess of 15 M.P.H. WCMC Art 5 sec. 11-1-516
  - Dogs must be securely leashed at all times, unless otherwise posted. WCMC Art 5 sec. 11-1-507
  - Motorized vehicles of all types are prohibited. WCMC Art 5 sec. 11-1-515
  - Firearms, weapons and destructive devices are not permitted. WCMC Art 5 sec. 11-1-505
  - Camping and fires are not permitted. WCMC Art 5 sec. 11-1-502,503
  - Alcoholic beverages may not be consumed within the Open Space. WCMC Art 5 sec. 11-1-514
  - Due to fire hazards, smoking and open fires are prohibited in the Open Space. WCMC Art 5 sec. 11-1-513

LITTER DESTROYS BEAUTY. IF YOU PACK IT IN, PACK IT OUT! THANK YOU!

**LEGEND**

<b>Map Symbols</b>	<b>Trails</b>
Trailhead	Hikers, Horses & Bicycles
Parking	Hikers & Horses only
Camp facilities	Connector trails
Ranger station	<b>Other linear features</b>
Picnic area	public open space boundary
Restrooms	Access road
Amphitheater	Other roads
Gate	Fence
Water tank	Powerlines
Building	<b>Water features</b>
Spot elevation	Canal
<b>Vegetation</b>	Intermittent stream
Oak woodland	Creek
Index contour (every one hundred feet)	Pond
Grassland	Spring
Chapparral	<b>Land use</b>
	Public park
	Urban area
	Privately held no public access
	Quarry

Map by LODESTARMAPS.COM 2022



**Shell Ridge Open Space**

**BORGES RANCH**

